



AMERICAN BOARD OF VETERINARY PRACTITIONERS

12TH ANNUAL PRACTITIONER'S SYMPOSIUM

ONSITE PROGRAM





THE AMERICAN BOARD OF VETERINARY PRACTITIONERS

would like to gratefully acknowledge the

Charter Sponsors

of the ABVP Practitioner's Symposium



Animal Health



Bayer





2007 ABVP PRACTITIONER'S SYMPOSIUM

NAME BADGES

Name badges will be required for participation in all sessions, workshops, luncheons and exhibit viewing. Badges may be picked up at the registration desk during the hours listed. ABVP appreciates the contribution of lanyards by Hill's Pet Nutrition.



CANCELLATIONS & REFUNDS

Cancellations and refunds are no longer permitted. Should you want to sell your ABVP Annual Banquet ticket, you can do so by posting them on the message board.

REGISTRATION DESK HOURS

Friday, April 27:	7:00am-12:00pm & 4:00pm-6:00pm
Saturday, April 28:	7:00am-4:00pm
Sunday, April 29:	7:30am-11:30am

EXHIBITS

Please be sure to visit our sponsors and exhibitors. Through their continued support, we are able to offer quality programs and still keep registration costs down.

Friday, April 27	9:00am-4:30pm
Saturday, April 28	9:00am-4:30pm

CONTINUING EDUCATION CREDITS

Attendees of the conference can earn a total of 18.0 hours of Continuing Education. Certificates are included in your conference materials.

Friday, April 27	9.0 hours
Saturday, April 28	6.0 hours
Sunday, April 29	3.0 hours

CELL PHONES AND PAGERS

Please be considerate of others and place all beepers and cell phones on silent mode. Should you need to take a call, please do so by exiting the lecture room.

ABVP ANNUAL BANQUET

Entertainment by Spiceman and the Caribbean Gems

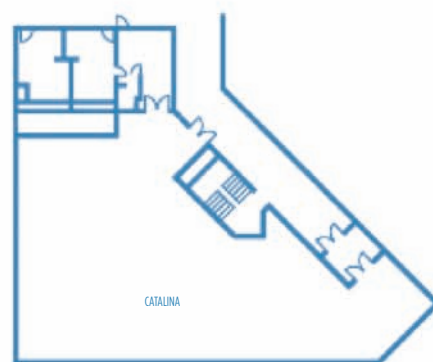
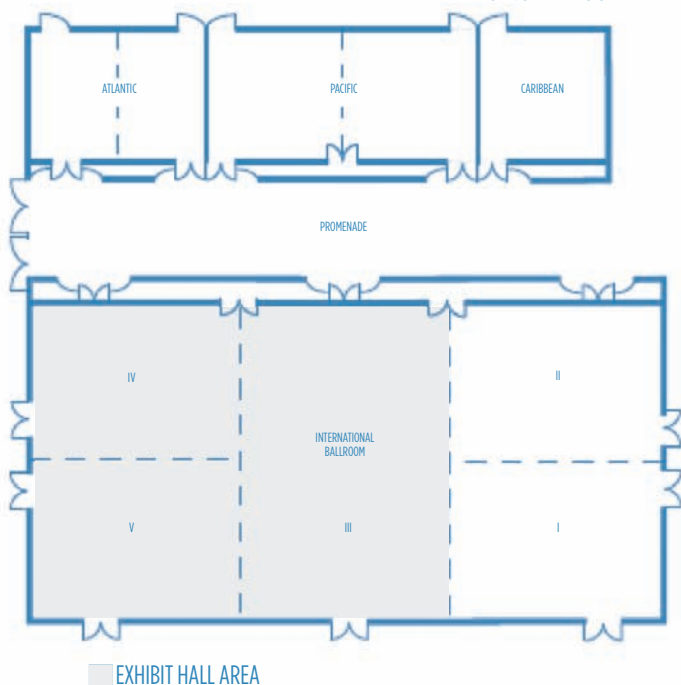
The ABVP Annual Banquet will be held on Saturday, April 28, 2007, from 7:00 - 10:00 pm at the Hilton. A cocktail reception will be held prior to the banquet at 6:30 pm. Entertainment will be provided by Spice Man & The Caribbean Gems. The Annual Banquet is open to all attendees and will honor new ABVP Diplomates.

Saturday, April 28, 7:00-10:00pm

Sponsored by  Bayer



SECOND FLOOR BALLROOM LEVEL







REGISTRATION
VIN CYBERCAFE

THIRD FLOOR MEETING ROOMS



FRIDAY - April 27, 2007

8:00am-9:50am	OSHA - Phil Seibert Jr. (International Ballroom I & II)				
9:50am-10:10am	BREAK Sponsored by  PURINA				
10:10am-11:00am	OSHA - Phil Seibert Jr. (International Ballroom I & II)				
11:10am-12:00pm	CONTROLLED SUBSTANCES RULES - Phil Seibert Jr. (International Ballroom I & II)				
12:00pm-1:30pm	NETWORKING LUNCH (Catalina)				
	Avian Atlantic I	Bovine Atlantic II	Canine/Feline Sponsored by  International Ballroom I & II	Equine Pacific I	Feline Pacific II
2:00pm-2:50pm	Avian Respiratory System: Anatomy, Physiology & Diseases - Part I Natalie Antinoff	Field Laparoscopy - "You Should See What You're Missing" Stephen Foulke	Clinical Gastroenterology of Dogs and Cats - Part I Todd Tams	Heaves and IAD - Part I Bonnie Rush	Indoor Housing Management for the Feline - Part I Tony Buffington
3:00pm-3:50pm	Avian Respiratory System: Anatomy, Physiology & Diseases - Part II Natalie Antinoff	Beef Cattle Welfare Bob Smith	Clinical Gastroenterology of Dogs and Cats - Part II Todd Tams	Heaves and IAD - Part II Bonnie Rush	Indoor Housing Management for the Feline - Part II Tony Buffington
3:50pm-4:10pm	BREAK				
4:10pm-5:00pm	Avian "Oddities" - Part I Natalie Antinoff	Beef Quality Assurance Bob Smith	Clinical Gastroenterology of Dogs and Cats - Part III Todd Tams	Strangles Bonnie Rush	Indoor Housing Management for the Feline - Part III Tony Buffington
6:00pm-7:30pm	WELCOME RECEPTION Sponsored by  Animal Health (Catalina)				
7:00pm-10:00pm	ITEM WRITING WORKSHOP (Pacific I)				
7:30pm	INDUSTRY DINNERS				
7:30pm-9:30pm	AAHA LEADERSHIP FORUM Sponsored by  Animal Health Jay McNaught and Linda Workman (Pacific II)				

*Save
the
Date*



ABVP • May 2-4, 2008
Savannah
13th Annual Practitioner's Symposium
HYATT REGENCY • SAVANNAH • GEORGIA

SATURDAY - April 28, 2007

	Avian Atlantic I	Bovine Atlantic II	Canine/Feline Sponsored by International Ballroom I & II	Equine Pacific I	Feline Pacific II
8:00am-8:50am	Avian "Oddities" - Part II Natalie Antinoff	Beef Cattle Receiving Programs Bob Smith	Clinical Gastroenterology of Dogs and Cats - Part IV Todd Tams	Viral Respiratory Disease - Part I Bonnie Rush	Interstitial Cystitis and the Feline - Part I Tony Buffington
9:00am-9:50am	Avian Neurology: Anatomy, Evaluation & Treatment, Diseases - Part I Natalie Antinoff	Therapeutic Management of BRD in Beef Cattle - Part I Bob Smith	Clinical Gastroenterology of Dogs and Cats - Part V Todd Tams	Viral Respiratory Disease - Part II Bonnie Rush	Interstitial Cystitis and the Feline - Part II Tony Buffington
10:00am-10:30am	BREAK Sponsored by 				
10:30am-11:20am	Avian Neurology: Anatomy, Evaluation & Treatment, Diseases - Part II Natalie Antinoff	Therapeutic Management of BRD in Beef Cattle - Part II Bob Smith	Wellness Testing Programs: How Often Do We Find Abnormalities in Dogs and Cats Todd Tams	Foal Pneumonia Bonnie Rush	Interstitial Cystitis and the Feline - Part III Tony Buffington
12:00pm-1:30pm	NETWORKING LUNCHEON Sponsored by  Animal Health (Catalina)				
2:00pm-2:50pm	Pain Mgmt. and Critical Care - Part I Scott Echols	Reproductive Ultrasound in Cattle - Part I Brad Stroud	Surgical Intervention for Respiratory Distress Tony Mann	Elevated Liver Enzymes: What do They Mean? - Part I Debra Sellon	Trends in Feline Urolithiasis: What Do We See & Where Do We See Them? Jodi Westropp
3:00pm-3:50pm	Pain Mgmt. and Critical Care - Part II Scott Echols	Reproductive Ultrasound in Cattle - Part II Brad Stroud	Surgical Intervention for the Acute Abdomen Tony Mann	Elevated Liver Enzymes: What do They Mean? - Part II Debra Sellon	Calcium Oxalate Stones: Removal Techniques, Stone Analysis & Mgmt Jodi Westropp
3:50pm-4:10pm	BREAK				
4:10pm-5:00pm	Avian Anesthesia - Part I Scott Echols	Reproductive Ultrasound in Cattle - Part III Brad Stroud	Postoperative Management of the Acute Abdomen Tony Mann	Clostridial Enteritis Debra Sellon	Feline Nephroliths and Ureteroliths Jodi Westropp
5:00pm-6:00pm	DIPLOMATE MEETING (International I & II)* / CERTIFICATION WORKSHOP (Mediterranean I & II)*				
6:30pm-7:00pm	RECEPTION (Catalina Foyer)				
7:00pm-10:00pm	ANNUAL SYMPOSIUM DINNER & FUN NIGHT Sponsored by  Bayer (Catalina)				

* Third Floor

SUNDAY - April 29, 2007

	Avian Atlantic I	Bovine Atlantic II	Canine/Feline Sponsored by International Ballroom I & II	Equine Pacific I	Feline Sponsored by  Pacific II
8:00am-8:50am	Avian Anesthesia - Part II Scott Echols	Practical Approaches to the Problem Breeder Brad Stroud	Acute Wound Management - Part I Tony Mann	Weight Loss - Part I Debra Sellon	FIC: Diagnostics, Drugs & Long Term Management Jodi Westropp
9:00am-9:50am	Avian Anesthesia - Part III Scott Echols	Bovine Cloning Brad Stroud	Acute Wound Management - Part II Tony Mann	Weight Loss - Part II Debra Sellon	The Blocked Cat Jodi Westropp
10:00am-10:30am	BREAK				
10:30am-11:20am	Coelomic Soft Tissue Surgery Scott Echols	Evaluation of Frozen Thawed Semen Brad Stroud	Acute Fracture Management Tony Mann	Esophageal Disease Debra Sellon	Interesting Feline Cases: A Case Discussion Jodi Westropp

LECTURE DESCRIPTIONS

FRIDAY, April 27

CROSS SPECIES

8:00 am – 12:00pm Philip J. Seibert, Jr., CVT

OSHA and Controlled Substances Rules

Everyone wants to learn from others' mistakes instead of repeating them, so in this session we will look at the top five safety and OSHA compliance issues that affect other veterinary practices. We will also review the requirements for veterinary hospitals mandated by the Controlled Substance Act. We will discuss simple ways to prevent misuse and abuse from in-house pilfering and records tampering as well as client deceptions and scams. During the session, we will also dispel a few of the common misconceptions about both OSHA and controlled drug programs.

AVIAN

2:00 pm–3:50pm Natalie Antinoff, DVM

Respiratory System: Anatomy, Physiology & Diseases Part I & II

4:10 pm–5:00pm Natalie Antinoff, DVM

Avian “Oddities”: Unique Features of Anatomy, Physiology, Nutrition, or Species Anomalies – Part I

BOVINE

2:00pm–2:50 pm Stephan Foulke, DVM

Field Laparoscopy – “You Should See What You’re Missing”

Laparoscopic surgery has been around in human medicine and companion animal medicine for some time, but its use in ruminants has been limited mostly to the university setting. This course will review the use of the laparoscope in an ambulatory practice. Focus will be on displaced abomasum surgery and will go on to discuss other diagnostic uses such as exploratory surgery.

3:00pm–3:50pm Bob Smith, DVM

Beef Cattle Welfare

Good care and handling of beef cattle.....the cattle deserve it, consumers expect it, and we as veterinarians should serve as role models. The NCBA has developed “Guidelines for the Care and Handling of Beef Cattle”, which are workable and based on common sense and science. These have been endorsed by the AABP and the AVC. Highlight of the guidelines will be presented.

4:10pm–5:00pm Bob Smith, DVM

Beef Quality Assurance

Quality assurance means getting it right the first time. Producers and veterinarians play a vital role in producing safe, quality, wholesome beef. BQA programs benefit the cattle, the producer and the consumer, and included are such things as residue avoidance, proper injection techniques, carcass merit and consideration of the environment.

CANINE/FELINE Sponsored by MERIAL

2:00 pm–5:00pm Todd Tams, DVM

Clinical Gastroenterology of Dogs and Cats

Update on diagnostic and management approach to the problems of vomiting and diarrhea in dogs and cats. The following will receive emphasis: Diagnosis and management of gastric hypomotility, update on antiemetic drugs, best tests for accurate diagnosis of diarrhea, *Giardia*, IBD, GI lymphoma in cats (how do you know if a cat has IBD vs. intestinal lymphoma?), and pain control in patients with GI disease. Many case examples will be presented.

EQUINE

2:00pm–3:50pm Bonnie Rush, DVM

Heaves and Inflammatory Airway Disease (IAD)

Indications for systemic versus aerosolized therapy is based on the severity of the clinical signs, projected athletic use, and value of the horse.

4:10pm–5:00pm Bonnie Rush, DVM

Strangles

New diagnostic tests for strangles help identify horses with clinical disease, carrier states, or immune-mediated, strep-associated disease.

FELINE

2:00pm–5:00pm Tony Buffington, DVM

Indoor Housing Management for the Feline

The session will discuss the effects of indoor housing on the health and disease of domestic cats; how it influences disease risk, and how enrichment complements therapy for such diseases as obesity, type II diabetes, and some lower urinary tract disorders in cats.

SATURDAY, April 28

AVIAN

8:00am–8:50am Natalie Antinoff, DVM

Avian “Oddities”: Unique Features of Anatomy, Physiology, Nutrition, or Species Anomalies – Part II

See ABVP website for more information.

9:00am–11:20am Natalie Antinoff, DVM

Avian Neurology: Anatomy, Evaluation and Treatment, Diseases

See ABVP website for more information.

2:00pm–3:50pm Scott Echols, DVM

Pain Management and Critical Care

This lecture will cover critical care, monitoring and pain management of the avian patient, some perioperative care will be included and the course content will all be intended to help prepare applicants for board certification.

4:10pm–5:00pm Scott Echols, DVM

Avian Anesthesia – Part I

Unique aspects of avian anatomy and physiology will be covered in this portion of a two part lecture. Course content is intended to help prepare applicants for board certification.

BOVINE

8:00am–8:50am Bob Smith, DVM

Beef Cattle Receiving Programs

It is much more cost effective to prevent disease rather than to treat it. The primary disease affecting beef calves after weaning is BRD; once lung damage occurs there is a loss of performance, decreased carcass quality and increased risk of disease later in the feeding period. Properly designed and executed programs are an integral part of good animal husbandry, and set the stage for the calves' future. Success/failure factors will be reviewed.

9:00am–11:20am Bob Smith, DVM

Therapeutic Management of BRD in Beef Cattle

– Part I & II

BRD is the single most important disease in stocker and feeder cattle. The disease is all too common, even in preconditioned cattle. An aggressive surveillance program, trained caretakers, and science-based treatment programs reduce losses caused by this disease. Just as important as the actual treatments are sickpen management, diagnostics, and a record system that allows analysis of the outcome. Procedures used in our practice, as well as benchmarks will be discussed.

2:00pm–5:00pm Brad Stroud, DVM

Reproductive Ultrasound in Cattle

The first session of this lecture will include topics involving the practical clinical applications of ultrasound. Both still images and video clips will be used to show practitioners how to diagnose early pregnancy, multiple pregnancies, abnormal uterine contents, early embryonic death, and numerous ovarian situations including both normal and abnormal structures. Session two will focus on fetal sexing and the learning curve required to master the technique. We will also focus on some of the basic fundamentals of ultrasound and how to choose a unit that will work for various clinical applications.

CANINE/FELINE Sponsored by MERIAL

8:00am–9:50am Todd Tams, DVM

Clinical Gastroenterology of Dogs and Cats

This will be a continuation from Friday's discussion.

10:30am–11:20am Todd Tams, DVM

Wellness Testing Programs: How Often Do We Find Abnormalities in Dogs and Cats?

Wellness testing programs can be one of the most rewarding areas of your medical practice. This session will illustrate the importance of veterinarians performing routine wellness testing evaluations on dogs and cats. Data will be reviewed and case examples discussed.

2:00pm–2:50pm F. A. (Tony) Mann, DVM

Surgical Intervention for Respiratory Distress

This lecture will discuss surgical methods for management of respiratory distress that practitioners can perform in life-saving efforts. The conditions requiring these surgical procedures may be too serious to allow immediate referral. Specific techniques to be covered are tube tracheostomy, tracheal resection/anastomosis, thoracostomy tube placement, and diaphragmatic herniorrhaphy.

3:00pm-3:50pm F. A. (Tony) Mann, DVM

Surgical Intervention for the Acute Abdomen

This lecture will cover surgical preparation, exploratory celiotomy, and specific surgical techniques that a practitioner must be prepared to perform during treatment of acute abdomen. Notable intra-operative aspects of selected surgical acute abdomen conditions will be addressed and audience questions and participation are encouraged.

4:10pm-5:00pm F. A. (Tony) Mann, DVM

Postoperative Management of the Acute Abdomen

This lecture will emphasize the importance of vigilance and monitoring after celiotomy for treatment of acute abdomen. General supportive techniques, pain control, nutritional support, and management of complications will be addressed.

EQUINE

8:00am-9:50am Bonnie Rush, DVM

Viral Respiratory Disease

Issues regarding diagnosis, prevention, and management of influenza, herpes virus, and equine viral arteritis are rapidly changing and have received significant public attention.

10:30am-11:20am Bonnie Rush, DVM

Foal Pneumonia

There is objective data to support the use of immunostimulants in specific instances of pneumonia in foals.

2:00pm-3:50pm Debra Sellon, DVM

Elevated Liver Enzymes: What Do They Mean?

After a brief introductory review of hepatic anatomy and physiology, a series of equine cases will be presented and discussed in a problem-based format to illustrate key points in the approach to interpretation of increased liver enzymes in horses. The goal is for the practitioner to be better able to differentiate between hepatic enzyme increases due to primary hepatic disease and those that are a reflection of other types of systemic illness.

4:10pm-5:00pm Debra Sellon, DVM

Clostridial Enteritis

A review of enteric diseases of horses caused by clostridial organisms including *Clostridium difficile* and *Clostridium perfringens*. The types of enteric diseases caused by clostridial infection of foals and adult horses, pathogenesis of disease, diagnosis, treatment and prevention will be discussed.

FELINE

8:00am-11:20am Tony Buffington, DVM

Interstitial Cystitis and the Feline

This session will present a clinical summary of our studies of the etiopathogenesis of idiopathic cystitis in cats.

2:00pm-2:50pm Jodi Westropp, DVM

Trends in Feline Urolithiasis: What Do We See and Where Do We See Them?

This lecture will focus on trends in feline urolithiasis we have seen at the Gerald V. Ling Urinary Stone Analysis Laboratory and explanations for the types of stones we are currently receiving in addition to basic management strategies.

3:00pm-3:50pm Jodi Westropp, DVM

Calcium Oxalate Stones: Removal Techniques, Stone Analysis and Management

The location and prevalence of CaOx stones will be discussed. Furthermore, we will review basic and advanced methods of stone removal and analysis. Diet principles and long term management strategies for CaOx prevention in cats will be discussed.

4:10pm-5:00pm Jodi Westropp, DVM

Feline Nephroliths and Ureteroliths

This ever increasing problem of upper urinary tract calculi in cats will be discussed. Both conservative and aggressive medical and surgical management will be reviewed.

SUNDAY, April 29

AVIAN

8:00am-9:50am Scott Echols, DVM

Avian Anesthesia – Part II & III

Various techniques of both inhalant and injectable anesthesia will be covered in this second of a 2 part lecture. Course content is intended to help prepare applicants for board certification.

10:30am-11:20am Scott Echols, DVM

Coelemic Soft Tissue Surgery

An in-depth review of surgery of the pancreas, liver, GI tract and reproductive tract will be covered. Course content is intended to help prepare applicants for board certification.

BOVINE

8:00am-8:50am Brad Stroud, DVM

Practical Approaches to the Problem Breeder

Every cattle operation has its subfertile females. Some are easy to diagnose, but most appear normal upon palpation and ultrasound examination. Learn how to diagnose and systematically categorize problem breeders so that effective treatment options can be presented to the owner. Get a peek into futuristic assisted reproductive techniques for problem breeders.

9:00am-9:50am Brad Stroud, DVM

Bovine Cloning

Somatic Cell Nuclear Transfer (SCNT) has the potential to revolutionize the dairy industry by making tens of thousands of copies of the world's greatest producing cows as replacements. Veterinary practitioners will learn why cloning is currently too expensive for mass production, and what it will take to make it commercially viable.

10:30am-11:20am Brad Stroud, DVM

Evaluation of Frozen Thawed Semen

Damage to Frozen Sperm due to Mishandling (Thermally Exposing) During Routine Thawing and Handling. Frozen cattle semen is the heart beat of most applied reproductive biotechnologies. Be it AI, embryo transfer, IVF, or the use of sex sorted sperm, frozen semen is involved. After 26 years of evaluating thousands of samples of frozen semen intended for inseminating embryo donor females it is shocking what we see under the microscope. This session will teach the practitioner how to prepare a wet mount and practically evaluate frozen thawed semen. It will also provide insight into semen that has

been thermally exposed and damaged by uneducated field personnel including veterinarians.

CANINE/FELINE Sponsored by

8:00am-9:50am F. A. (Tony) Mann, DVM

Acute/Emergency Wound Management-Part I & II

This lecture is intended to be an interactive discussion of how to manage wounds at the time of initial presentation. Emphasis will be placed on what can be done in early wound management to result in an optimal clinical outcome. Decisions and techniques of initial wound management, wound closure and antibiotic therapy will be covered.

10:30am-11:20am F. A. (Tony) Mann, DVM

Acute Fracture Management

This lecture is intended to be an interactive discussion of how to manage fractures at the time of emergency presentation. Various temporary stabilization bandages and splints will be discussed. Open fracture management.

EQUINE

8:00am-9:50am Debra Sellon, DVM

Weight Loss

A review of the approach to the investigation of weight loss and failure to thrive in adult horses. Case material will be used to illustrate a systematic approach to diagnosis.

10:30am-11:20am Debra Sellon, DVM

Esophageal Disease

A discussion of the anatomy and physiology of the esophagus in horses. Case material will be used to illustrate the approach to diagnosis and treatment of specific esophageal disorders including esophageal choke, esophageal diverticula, megaesophagus, esophageal stenosis or stricture and other esophageal lesions.

FELINE Sponsored by

8:00am-8:50am Jodi Westropp, DVM

FIC: Diagnostics, Drugs and Long Term Management

A clinical approach to the FIC patient including diagnostics, drug therapy and multimodal environmental modifications will be presented.

9:00am-9:50am Jodi Westropp, DVM

The Blocked Cat

Pathophysiology, emergency and critical care needs of the blocked cat, and follow up care will be discussed.

10:30am-11:20am Jodi Westropp, DVM

Interesting Feline Cases: A Case Discussion

This hour will focus on case base discussions incorporating the principles from the previous talks, including feline stones, and unique feline lower urinary tract cases.

2007 ABVP EXHIBITORS/SPONSORS

We wish to thank the exhibitors and sponsors for their contribution in making this symposium a success. Be sure to stop by and visit with them about your needs.

ALOKA Ultrasound (Booth # 11)

10 Fairfield Blvd. Wallingford, CT 06492

Phone: (800) 872-5652; (203) 269-5088; Fax: (203) 269-6075

Website: www.aloka.com

ALOKA Ultrasound provides ultrasound equipment.

American Animal Hospital Association (Booth # 6 & 7)

12575 W. Bayaud Ave. Lakewood, CO 80228

Phone: (303) 986-2800; (800) 252-2242 Fax: (303) 986-1700

Website: www.aahanet.org

The AAHA provides educational programs and publications and is the only organization that accredits animal hospitals throughout the U.S. & Canada adhering to the highest standards of veterinary care.

Bayer Health Care (Booth # 12 & 13)

P.O. Box 390, Shawnee Mission, KS 66201

Phone: (660) 731-5270; Fax: (660) 731-5269

Web site: www.bayer-ah.com

Bayer Animal Health is a leader in the manufacture and marketing of pharmaceuticals to control parasites and diseases in dogs, cats, horses, and cattle.

BCP Veterinary Pharmacy (Resource Table)

1614 Webster St. Houston, TX 77003

Phone: (713) 771-1144; (800) 481-1729; Fax: (713) 771-1131

Web site: www.bcpvetpharm.com

BCP Veterinary Pharmacy helps solve the unique medication-related challenges veterinarians and animal care specialists face.

Boehringer Ingelheim Vetmedica (Resource Table)

2621 North Belt Highway, St. Joseph, MO 64506

Phone: (800) 325-9167; Fax: (816) 326-9167

Website: www.bi-vetmedica.com

Boehringer Ingelheim Vetmedica provides a wide range of animal health products, including biologicals and pharmaceuticals, for dogs, cats, horses, cattle and swine.

Eklin Medical Systems (Booth # 4)

1605 Wyatt Dr., Santa Clara, CA 95054

Phone: (408) 492-0057; Fax: (408) 904-5713

Website: www.eklin.com

Eklin Medical Systems provides digital radiography and PACS.

Elsevier (Booth # 2 & 3)

10898 El Mar Ave. Fountain Valley, CA 92078

Phone: (949) 929-4717; Fax: (714) 965-6293

Website: www.elsevier.com

Elsevier is the world's leading publisher of science & health information.

Heska (Booth # 19)



3760 Rocky Mountain Ave., Loveland, CO 80538

Phone: (800) GO HESKA; (970) 619-3059; Fax: (970) 619-3008

Website: www.heska.com

Heska Corporation sells advanced veterinary diagnostic and other specialty veterinary products.

Hill's Pet Nutrition (Booth # 21)

400 SW 8th Ave., Topeka, KS 66603

Phone: (800) 548-VETS (8387); Fax: (310) 379-1484

Website: www.hillspet.com

Hill's provides advanced therapeutic and wellness foods to veterinary professionals.

Medisales (Booth # 16 & 17)

10541 Humbolt St. Los Alamitos, CA 90720

Ph. (866) 318-MEDI (6334); (562) 430-8779; Fax (562) 430-8769

Website: www.ultrasound4vets.com

Medisales provides refurbished Ultrasound / Naomi Direct DR Sensor.

Merial (Booth # 1)

3239 Satellite Blvd., Bldg. 500 Duluth, GA 30096

Phone: (888) MERIAL-1

Website: www.usmerial.com



Merial is a world-leading animal health company that provides pharmaceutical products and vaccines for livestock, pets and wildlife.

Mind the Future (Booth # 22)

4815 E. Cascalote Dr., Cave Creek, AZ 85331

Phone: (480) 215-7780; Fax: (480) 515-9646

Mind the Future provides products that improve the quality of life indoors.

Nestle Purina (Resource Table)



Checkerboard Square. St. Louis, MO 63164

Phone: (800) 222-VETS (8387); Fax: (314) 982-4274

Website: www.purinavets.com

Nestle Purina provides innovative wellness and prescription diets for dogs and cats.

PetRays Veterinary Radiology Consultants (Booth # 18)

210 Spring Hill Drive, Suite 150, Spring, TX 77386

Phone: (888) 4-PETRAYS; Fax: (281) 363-0352

Website: www.petrays.com

PetRays provides veterinary radiology consulting services.

Pfizer Animal Health (Booth # 10)



235 East 42nd Street NY, NY 10017

Phone: (800) 733-5500; (212) 973-7351

Website: www.pfizerah.com

Pfizer Animal Health is a leading pharmaceutical company that offers a broad range of products, including vaccines and prescription medicines, for companion animals and livestock.

PMA Services (Booth # 20)

1269 W. Pomono Rd., Suite 112 Corona, CA 92882

Phone: (800) 334-1159; Fax: (951) 270-0393

Website: www.pmasvcgroup.com

PMA Services Group provides BC-2800 Ver., reconditioned clinical laboratory equipment and refurbishment services.

Schering-Plough Animal Health (Booth # 15)

10409 I Street Omaha, NE 68127

Phone: (800) 521-5767; Fax: (559) 921-4320

Website: www.spah.com/usa

Schering-Plough Animal Health is a provider of vaccines, pharmaceuticals and specialty products for animals.

Sound Technologies, Inc. (Booth # 8 & 9)

5817 Dryden Place, Suite 101 Carlsbad, CA 92008

Phone: (800) 268-5354 (Option 1); Fax: (760) 918-9620

Website: www.soundvet.com

Sound Technologies provides digital ultrasound, digital radiography, PACS/telemedicine services, & computed radiography.

VetSpecs Inc. (Booth # 5)

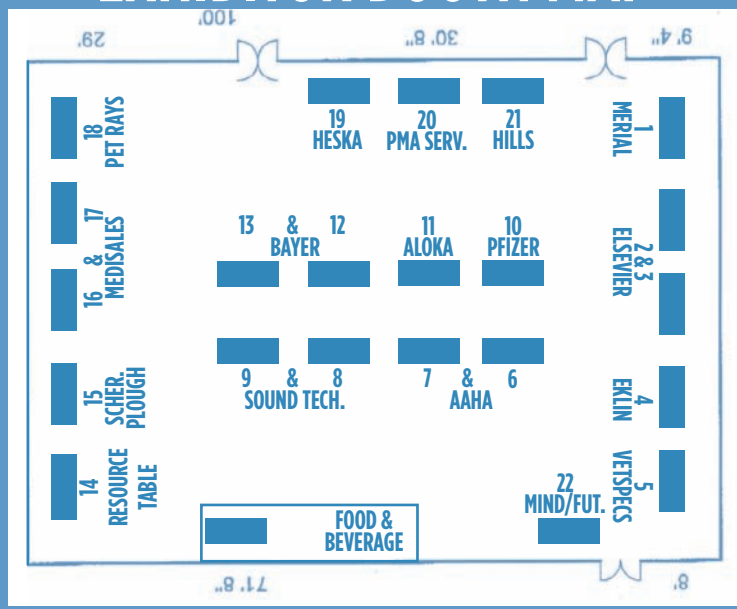
111 Mountain Brooke Dr. #200 Canton, GA 30115

Phone: (800) 705-0113 (678) 493-3555; Fax: (678) 493-3566

Website: www.vetspecs.com

VetSpecs provides vital signs monitors.

EXHIBITOR BOOTH MAP



SPONSORS

